

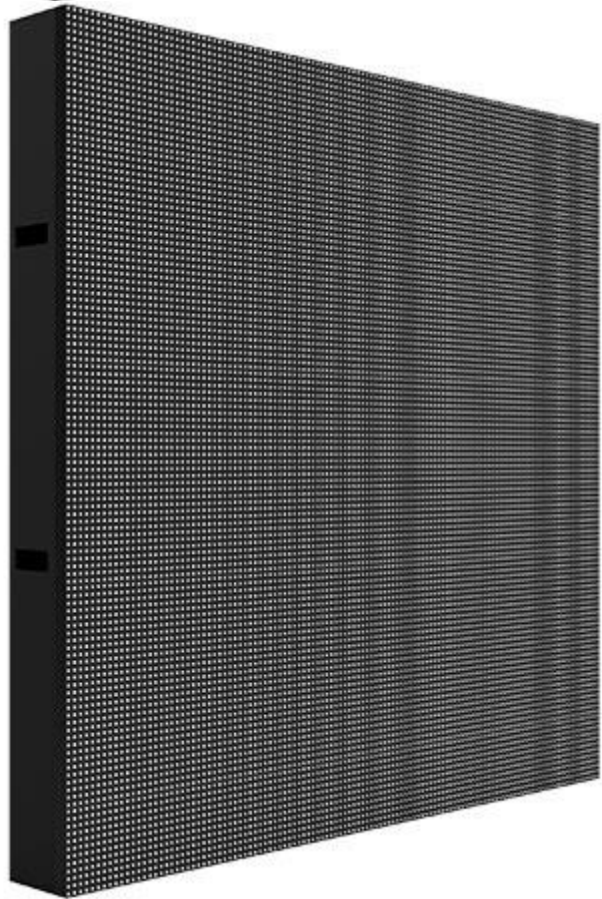
FS8

Bring Everything Closer To You



1-888-LED-6012

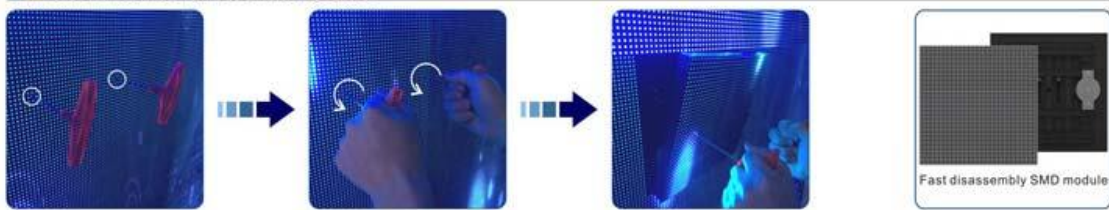




FEATURES

- Uniform color and high contrast ratio, bringing up fresh and natural image
- Low power consumption and fine heat release
- Super wide viewing angle increasing its value by covering more audience
- No deformation under sunlight by the use of anti-UV modules
- Long service time and low attenuation by applying duel channels for heat dissipation
- High protection grade of IP65 achieved by applying duel channels for heat dissipation
- High protection grade of IP65 achieved by patented mask design with waterproof and dustproof function
- Safe and reliable operation ensured by stable signal and power supply

■ Front Maintenance Illustration



SPECS

| Item | Value | |
|---------------------------------------|--------------------------------|-------|
| Pixel Pitch(mm) | 8 | |
| Pixel Density(pixels/m ²) | 15625 | |
| Pixel Configuration | SMD | |
| Viewing Angle(deg.) | 160(Horizontal), 160(Vertical) | |
| Brightness(nits) | ≥5500 | ≥6500 |
| Grey Level(bit) | 12/14/16 | |
| Refresh Rate(Hz) | 1920/2880/3840 | |

| | | |
|---|--------------------------|------------------------|
| Panel Size(mm) | 960(W)×960(H)×130(D) | 1024(W)×1024(H)×130(D) |
| Panel Size(inch) | 37.80(W)×37.80(H)×5.1(D) | 40.3(W)×40.3(H)×5.1(D) |
| Panel Resolution(pixels) | 120×120 | 128×128 |
| Panel Material | Aluminum/Iron | |
| Weight(kg/m ²) | ≤45/≤55 | |
| Module Size(mm) | 240(W)×240(H) | 256(W)×256(H) |
| Module Size(inch) | 9.45(W)×9.45(H) | 10.08(W)×10.08(H) |
| Module Resolution(pixels) | 30×30 | 32×32 |
| Protection Grade(Front/Rear) | IP65/IP54 | |
| Serviceability | Front/Rear | |
| Voltage(V) | AC 100~AC 240 | |
| Avg.Power Consumption(W/m ²) | 153 (AC) | 188 (AC) |
| Max.Power Consumption(W/m ²) | 610 (AC) | 750 (AC) |
| Operating Temp/Humidity(°C/%RH) | -20~50/10~90 | |
| Storage Temp/Humidity(°C/%RH) | -40~60/0~90 | |
| Lifetime(Normal Temp)(hours) | 100000 | |
| Compliant Standard | CE FCC RoHS | |
| Notes: Specifications are for reference only. Please contact our salesperson for details. All rights are reserved to US LED | | |