

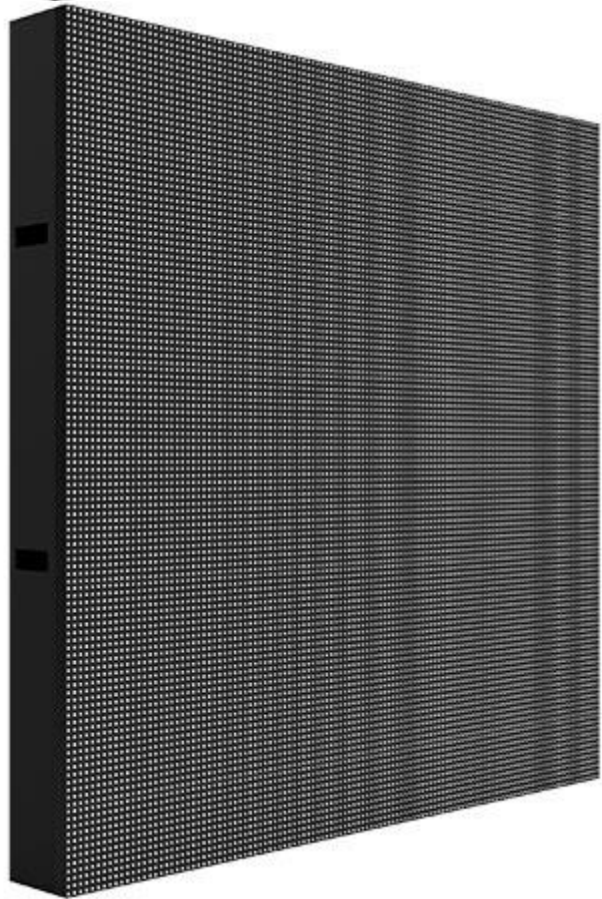
FS10

Bring Everything Closer To You



1-888-LED-6012

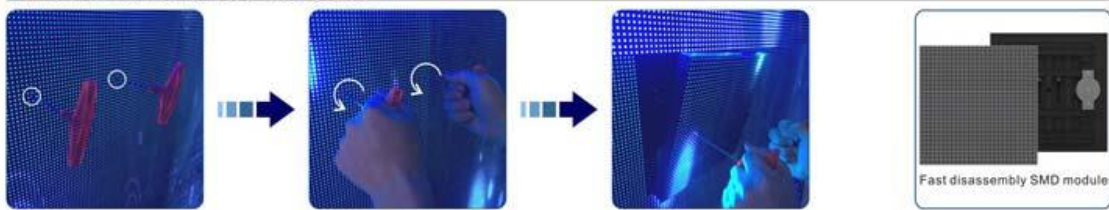




FEATURES

- Uniform color and high contrast ratio, bringing up fresh and natural image
- Low power consumption and fine heat release
- Super wide viewing angle increasing its value by covering more audience
- No deformation under sunlight by the use of anti-UV modules
- Long service time and low attenuation by applying duel channels for heat dissipation
- High protection grade of IP65 achieved by applying duel channels for heat dissipation
- High protection grade of IP65 achieved by patented mask design with waterproof and dustproof function
- Safe and reliable operation ensured by stable signal and power supply

■ Front Maintenance Illustration



SPECS

Item	Value
Pixel Pitch(mm)	10
Pixel Density(pixels/m ²)	10000
Pixel Configuration	SMD
Viewing Angle(deg.)	160(Horizontal), 160(Vertical)
Brightness(nits)	≥6500
Grey Level(bit)	12/14/16
Refresh Rate(Hz)	1920/2880/3840

Panel Size(mm)	1440(W)×960(H)×130(D)
Panel Size(inch)	56.7(W)×37.80(H)×5.1(D)
Panel Resolution(pixels)	144×96
Panel Material	Aluminum/Iron
Weight(kg/m ²)	≤45/≤55
Module Size(mm)	240(W)×240(H)
Module Size(inch)	9.45(W)×9.45(H)
Module Resolution(pixels)	24×24
Protection Grade(Front/Rear)	IP65/IP54
Serviceability	Front/Rear
Voltage(V)	AC 100~AC 240
Avg.Power Consumption(W/m ²)	180 (AC)
Max.Power Consumption(W/m ²)	720 (AC)
Operating Temp/Humidity(°C/%RH)	-20~50/10~90
Storage Temp/Humidity(°C/%RH)	-40~60/0~90
Lifetime(Normal Temp)(hours)	100000
Compliant Standard	CE FCC RoHS
Notes: Specifications are for reference only. Please contact our salesperson for details. All rights are reserved to US LED	